

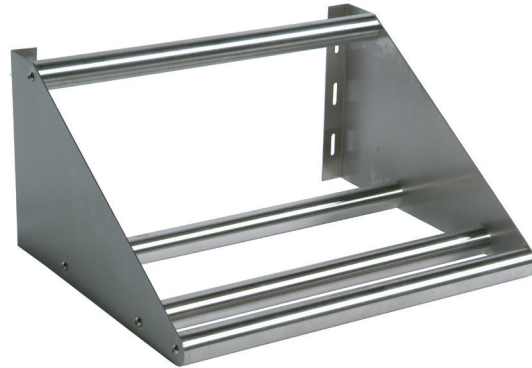
# Tubular Dish Shelf

## Stainless Steel Shelving



Use your smart phone to scan the above QR code to visit our website:  
[www.bk-resources.com](http://www.bk-resources.com)

### Certifications:



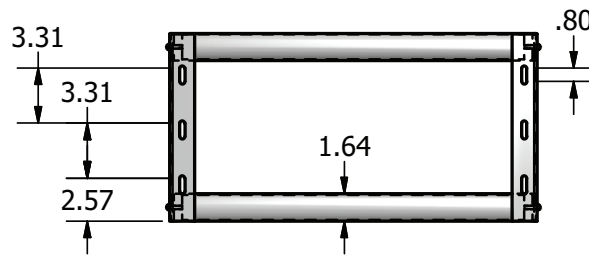
### Features:

- 1-5/8" O.D. Stainless Tubing
- Slotted Mounting Holes For Easier Mounting

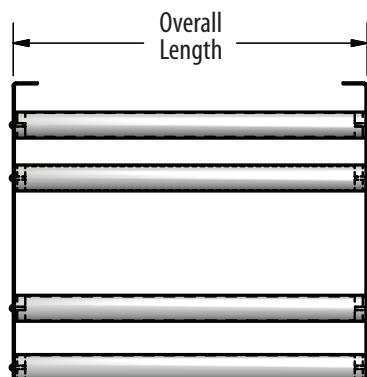
### Material:

- T-304 18 ga. Stainless Steel

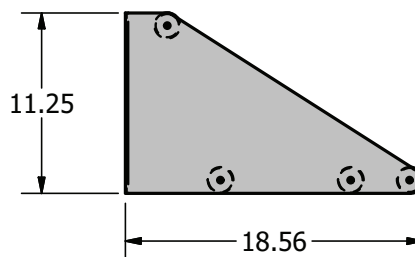
Part Number	Length	Unit Size (l x w x h)	Product Weight (lbs)
BK-TSH-22	22"	22" x 18 9/16" x 11 1/4"	13.50
BK-TSH-42	42"	42" x 18 9/16" x 11 1/4"	19.00
BK-TSH-63	63"	63" x 18 9/16" x 11 1/4"	26.50



BK-TSH-XX  
FRONT VIEW  
Scale = 1:10



BK-TSH-XX  
TOP VIEW  
Scale = 1:10



BK-TSH-XX  
SIDE VIEW  
Scale = 1:10

PRODUCT DATA SHEET

RESOURCES

